

Voltage Detector for Medium and Low voltage

HSS-25B1 type

For AC80~25000V Telescopic Type



When extended



Accessory: Storage case

■ Features

- Detectable high voltage at safe distance.
(Insulation Rod to be extended for high voltage, and shortened for low voltage.)
- Telescopic, compact and light weight.
- Suitable for inspection and check of electric installation.
- The device sounds an electronic buzzer audible clearly and lights up a high luminance light.
- Insulation rod made of resin is can be decomposed so as to remove water for safety.

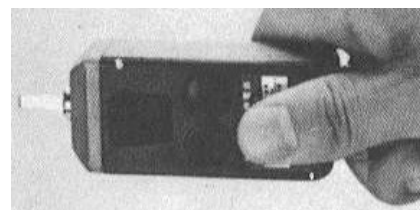
■ How to use

(1) High Voltage Detection (with Insulation Rod extended)

Pull out the Insulation Rod to the full and put the contact tip in contact with the subject line to detect voltage, holding the grip. Do not touch any part other than the grip, as it is unsafe.

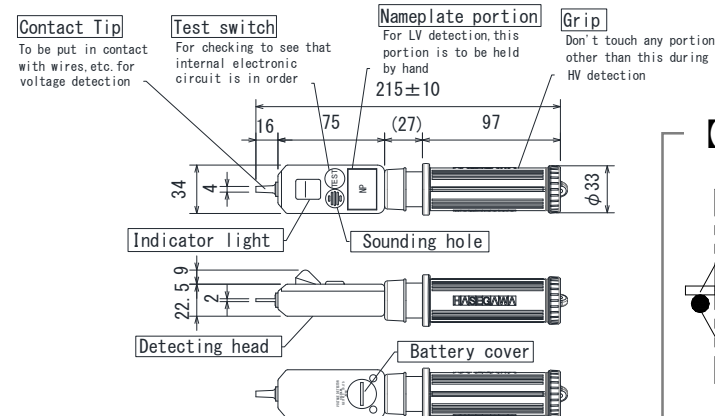
(2) Low Voltage detection

Put the contact tip in contact with the subject line, holding the nameplate portion. (see the right picture)

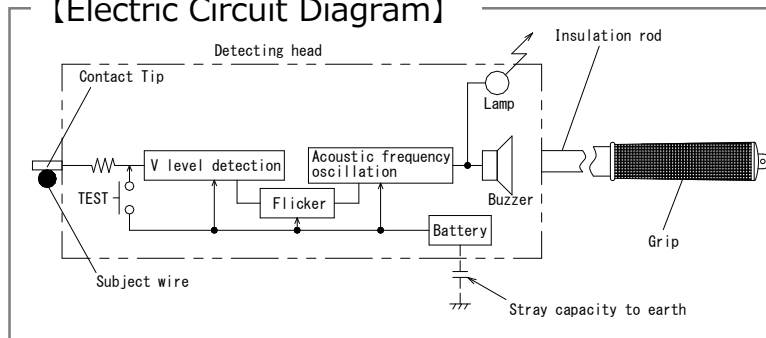


■ Dimensions and Electric Circuit Diagram

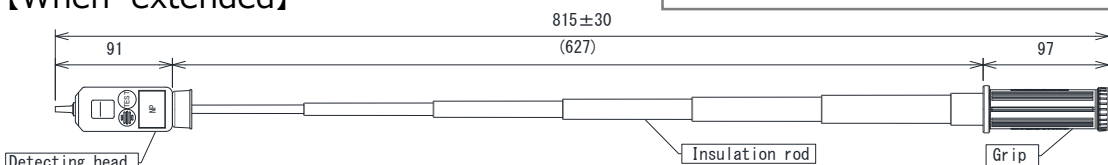
【When contracted】



【Electric Circuit Diagram】



【When extended】



■ Specifications

Working Voltage Range	AC80V~25kV
Rated Operating Voltage (Minimum response voltage to ground)	For high voltage (Detect with your hand holding the grip) Bare wire (φ3 mm) : AC 250 V± 50 V OC wire (φ5 mm) : AC 1000 V±200 V For low voltage (Detect with your hand holding nameplate portion) Bare wire : AC 80V or below
Rated Non-operating Distance	Distance at which operation starts when contact tip is brought near φ5 mm OC wire with grip portion held by hand 25 kV / √3 (voltage to ground) about 20cm 6.6 kV / √3 (voltage to ground) about 3cm 3.3 kV / √3 (voltage to ground) about 1cm
Weight	About 140g
Frequency	50Hz/60Hz
Dielectric Strength	Between contact tip and grip : AC 20kV for 1 min.(extended) Between contact tip and nameplate portion : AC 4kV for 1 min.
Insulation Resistance	The same spot as the dielectric strength test : 100MΩ or more
Leakage Current	During the dielectric strength test : 100μA or less
Construction	Waterproof at the detecting head (not at the Insulation Rod)
Display	Light : Flashing red light, distinguishable in brightness of 8,000 luxes Sound : Intermittent sound, 50dB min. 2m away
Battery	2 Alkaline button-cells LR44 (1.5 V)
Operating Temperature	-10℃ ~ +40℃

DONHO
唐和股份有限公司

台北總公司: 台北市內湖區瑞光路618號8F

TEL: 0226271088 FAX: 0226277369

台中分公司: 台中市西屯區朝富路213號22樓-2

TEL: 0422525037 FAX: 0422525057

高雄分公司: 高雄市楠梓區德民路220號

TEL: 073651388 FAX: 073651399

MAIL: donho@donho.com.tw

WEB: <https://www.donho.com.tw/>